



IMPORTANT INFORMATION

Note! Please visit www.jeld-wen.com for additional resources and complete instructions. We have How-To videos and written Product Guides available for most products. Contact us for more information.

INCLUDED PARTS

- Operator
- Six (6) screws

PRECAUTIONS AND SAFETY

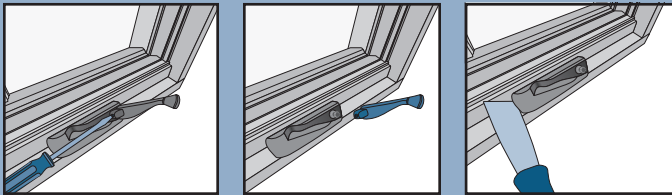
- Use proper and safe equipment and protective gear as necessary.

NEEDED TOOLS

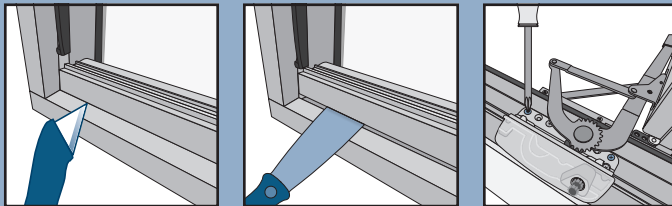
- Phillips head screwdriver
- Flat head screwdriver
- Utility knife
- Putty knife
- Staple gun or brad nailer
- Wood putty or filler
- Small pry bar

CASEMENT OPERATOR REPLACEMENT

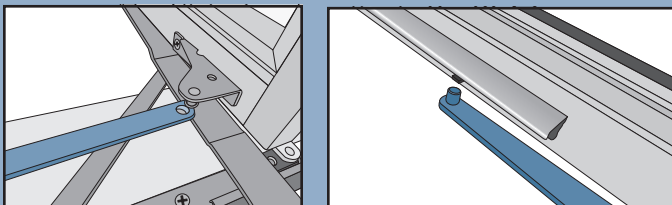
1. Open the window fully.
2. Remove the operator handle by loosening the set screw and pulling toward the interior.
3. Remove the operator cover by gently inserting a putty knife or small pry bar under one side and rotating up until it snaps off. Pull to the interior to remove.
4. Score the joint between the operator cover and the frame.



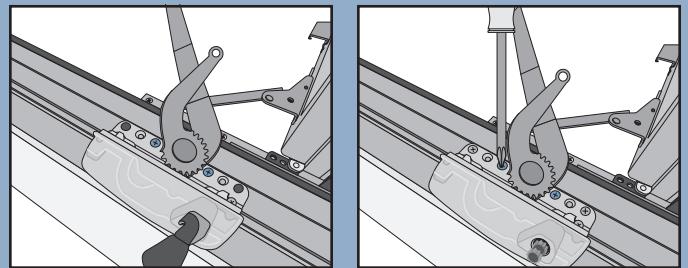
5. Insert a putty knife or small pry bar between the operator cover and the frame and gently pry upward to release the staples and remove.
6. Remove all screws from the operator that are accessible.



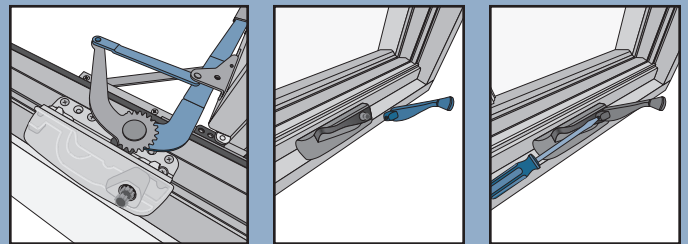
7. As applicable, remove the jointed operator arm by prying between the arm and the bracket until it pops off.
8. As applicable, remove the long operator arm by pressing down until it releases from the guide.



9. Remove the rest of the screws in the operator. Move the arms as necessary to access the screws.
10. Remove the old operator and set the new one in place.
11. Secure with the provided screws. Move the arms as necessary to access the screws.



12. As applicable, reattach the jointed and long operator arms. Move the arms as necessary to access the screws.
13. Reinstall the operator cover.
14. Reinstall the handle cover.
15. Reinstall the handle and crank the window closed to test operation. Move the handle to the appropriate spline to allow it to nest properly.
16. Tighten the set screw.



17. Staple the operator cover back into place through the screen stop and fill the holes if desired.

The advice offered herein can be done by a homeowner with some mechanical aptitude. If you are unsure, it is recommended that you hire a trained service provider such as a competent and licensed construction contractor or building professional. JELD-WEN disclaims any and all liability associated with the use and/or provision of these instructions. Any reliance upon the information or advice is at the risk of the party so relying. The information contained herein may be changed from time to time without notification.